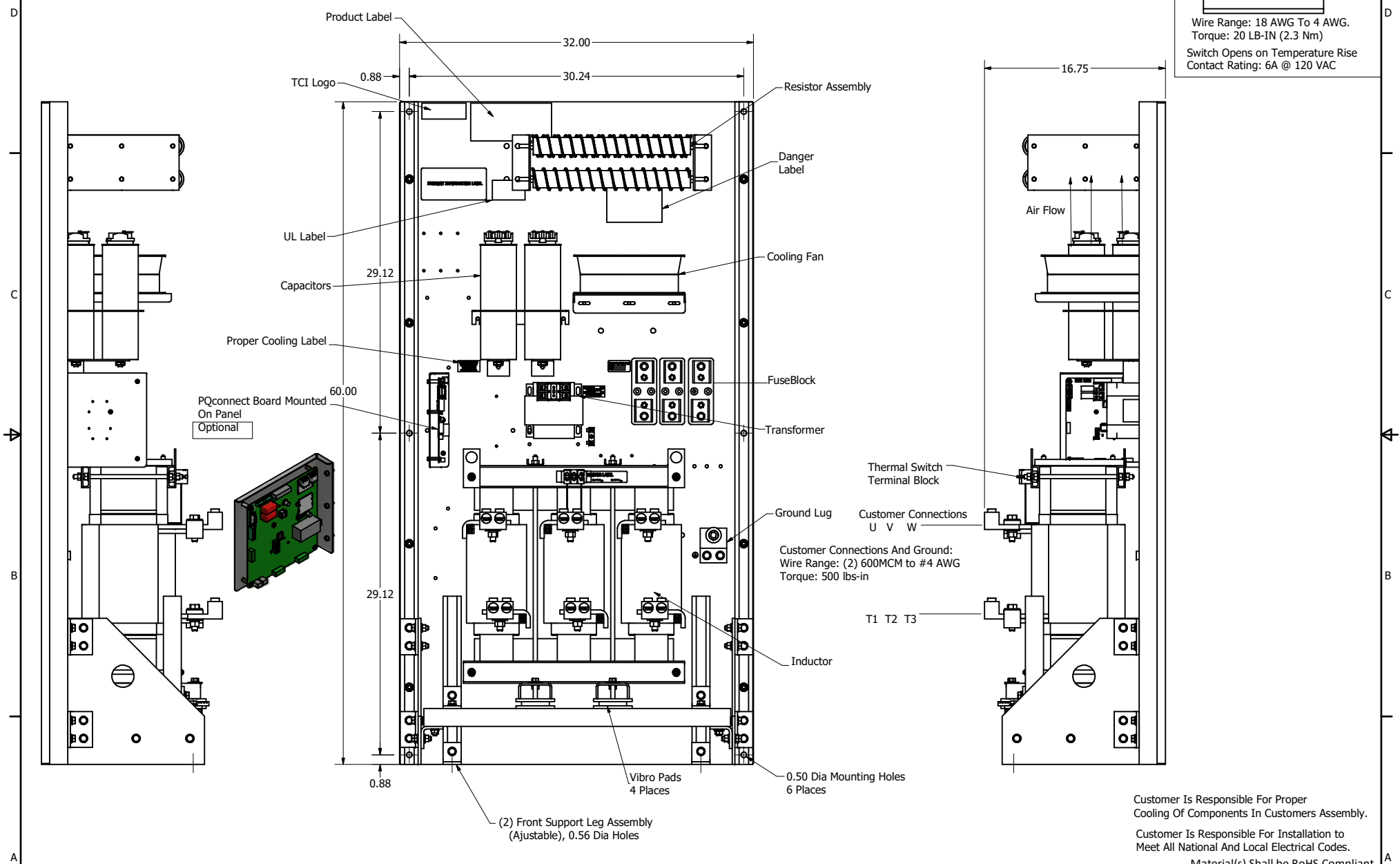
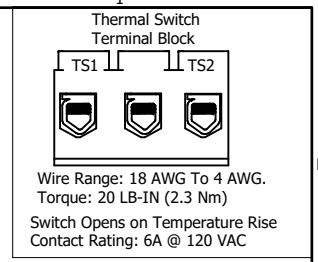


SineWave Part Number	Schematic Drawing#	Approx Weight (LBS)
KMG600C00A	24281-23A	750
KMG600C00P	24281-23P	755

HorsePower (HP)	kVar	Max Amps	Voltage (V)	HZ	Phase
600	60	600	600	60	3



Customer Connections And Ground:
Wire Range: (2) 600MCM to #4 AWG
Torque: 500 lbs-in

Customer Is Responsible For Proper Cooling Of Components In Customers Assembly.

Customer Is Responsible For Installation to Meet All National And Local Electrical Codes.

Material(s) Shall be RoHS Compliant

TCI, LLC CLAIMS PROPRIETARY RIGHTS IN THE MATERIAL HEREIN DISCLOSED. IT IS SUPPLIED WITHOUT PREJUDICE TO ANY PATENT RIGHTS OF TCI AND MAY NOT BE REPRODUCED OR USED TO MANUFACTURE ANYTHING SHOWN THEREIN WITHOUT WRITTEN PERMISSION FROM TCI.					TOLERANCES (EXCEPT AS NOTED) DECIMAL .XX ± .25 .XXX ± .10	TCI W132 N10611 Grant Drive Germantown, WI 53022 KMG600C00-, SineWave Filter Open Panel, 600HP, 600V	
					FRACTIONAL ± 1/16		
	B	Add PQconnect Board	9/25/2020	DSW			DRN BY: DSW DATE: 10/12/2016 SCALE: 1/5 FILE:
	NO	REVISION	DATE	BY	± 1°		104433DG SHEET 1 OF 1